

Reindeer

DIY PAPERCRAFT

Guide



Reindeer Template

General instructions

Creating your three dimensional papercraft project takes time, but you'll be rewarded, you'll have fun on the way and you'll see that you can transform a piece of paper in amazing sculptures.

To assemble this template you'll need:

- PDF viewer software
- A printer to print the template
- A4 paper (160 - 200gsm)
- Scissors or stationery knife
- Ruler (metal if possible)
- Scoring tool or exacto knife
- Bone folder or other similar tool to crease fold lines
- PVA glue or high tack double sided stick tape
- Small paint brush (optional)
- Cutting base (optional)

Base color scheme:



Ready to start?

Printing and cutting

Templates are designed to fit A4 paper (210mm x 297mm).

1 - Print the pages (to print in actual size ensure you have selected to print at **Actual Size** or **100%** in the print dialogue box).

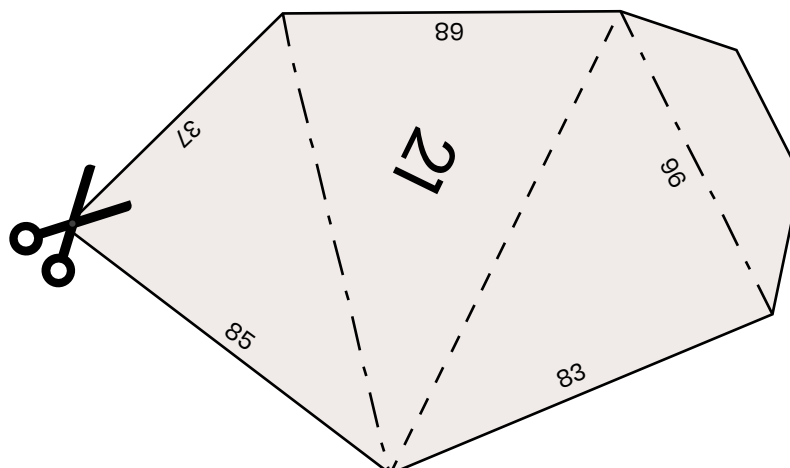
There are different types of lines printed on your template:

Cutting line —————

Mountain fold — — — — —

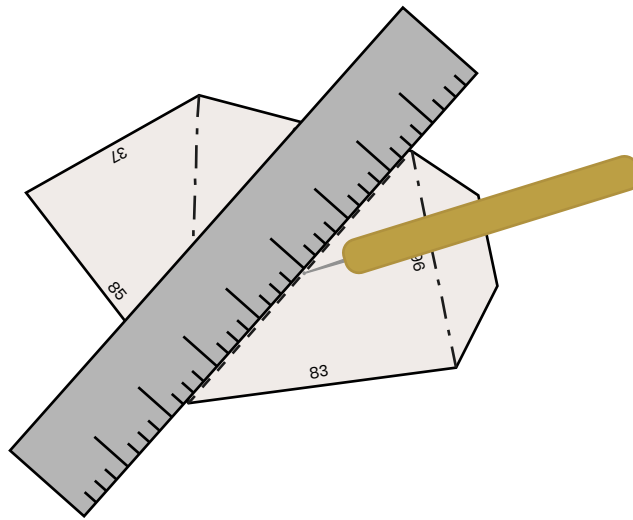
Valley fold — — — — —

2 - Cut the shapes (a solid line represents a cut line, cut all solid lines using the scissors or the stationery knife).

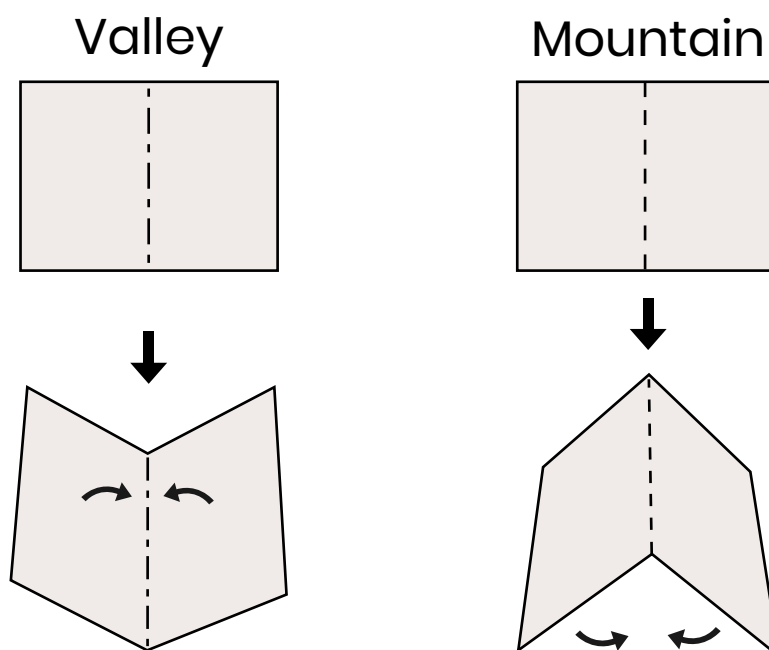


Scoring and folding

3 - After you have cut out all the shapes, you should prepare them for folding by scoring along the fold lines with a scoring tool to create a indentation.

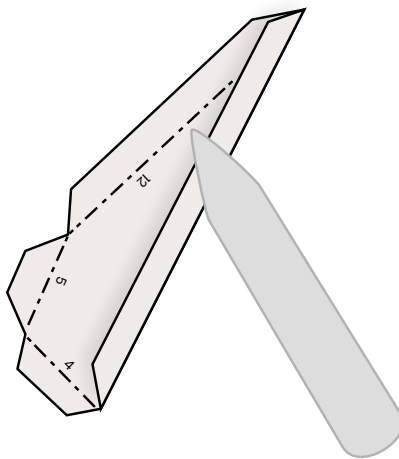


4 - Now let's fold. There are two folding techniques. Mountain fold makes valleys on the outside of the finished object. Valley folds are mountains or neutral on the finished object.

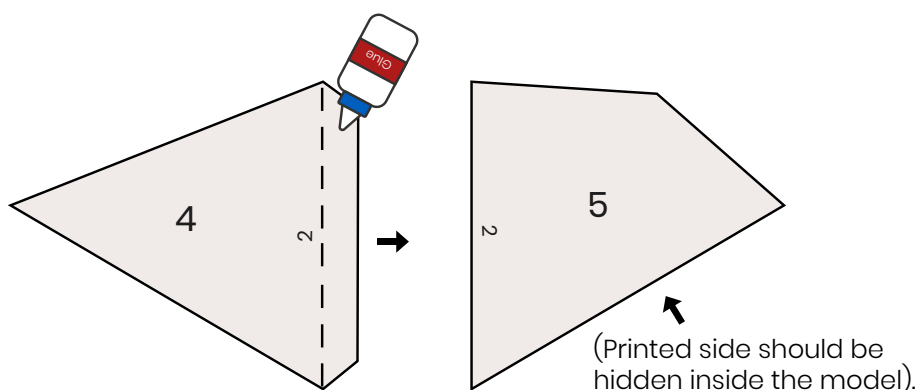


Sticking and assembly

5 - Make each fold in the paper sharp as possible. It help make the fitting of the components more precise when you come to assemble your sculpture. You can use a bone folder along the folded paper while you press down firmly, flattening the fold. If you don't have a bone folder, you can use the ruler or the handle of a metal scissors too.



6 - Past the same numbers together. Glue the numbered tab to the corresponding numbered edge. Doesn't matter the order of the numbers, but it's easier sort the parts into numerical order before you begin sticking the sculpture together. You can use a small paint brush to lightly apply the glue evenly (glue flaps on the non-printed side, printed side should be hidden inside the model).

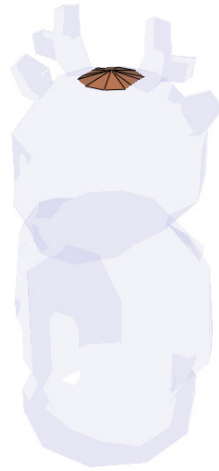
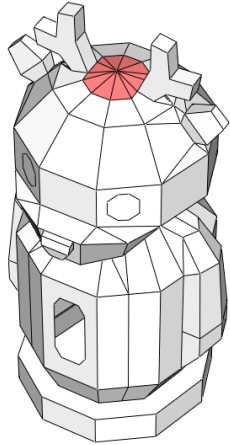


Copyright

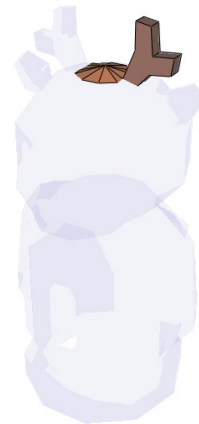
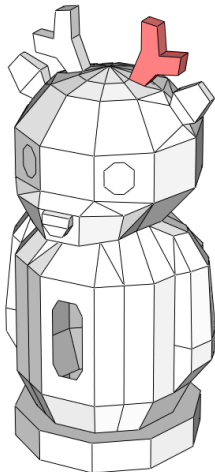
Vivint - All rights reserved.

Assembly Scheme (1-12)

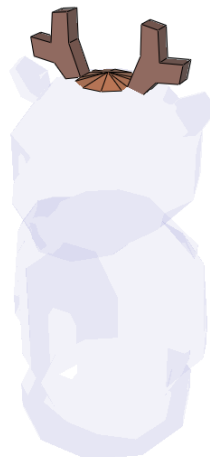
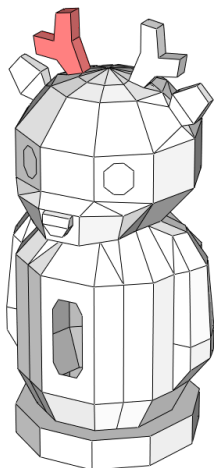
01



02

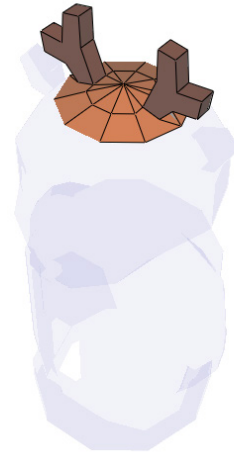
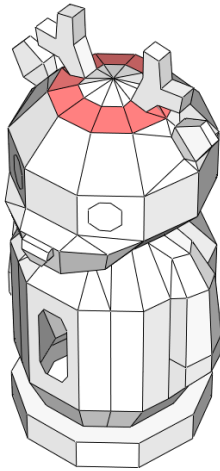


03

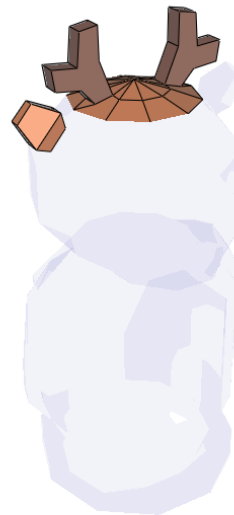
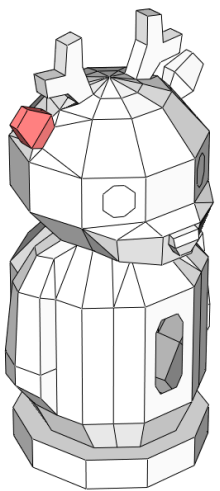


Assembly Scheme (2 - 12)

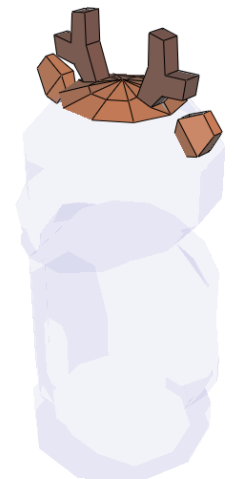
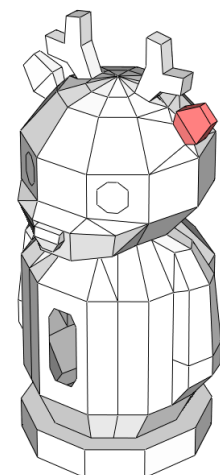
04



05

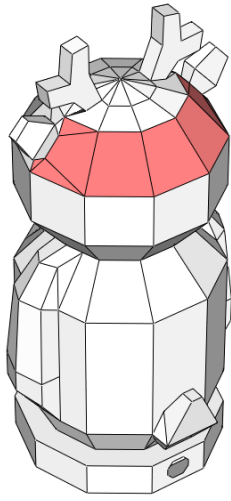


06

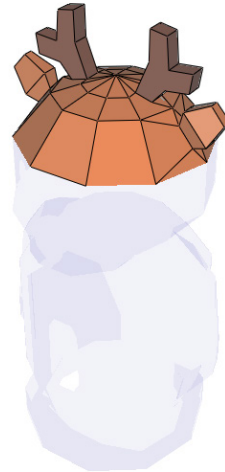
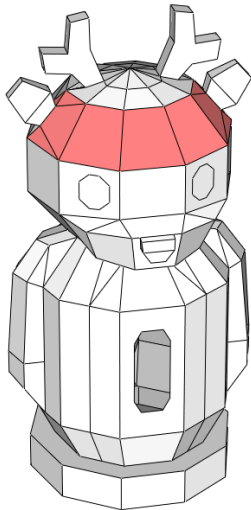


Assembly Scheme (3 - 12)

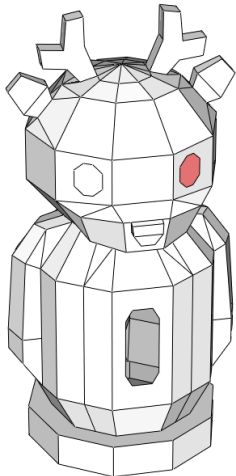
07



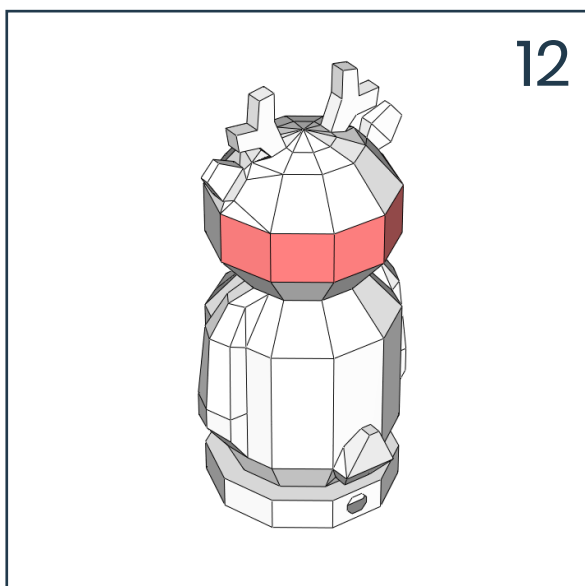
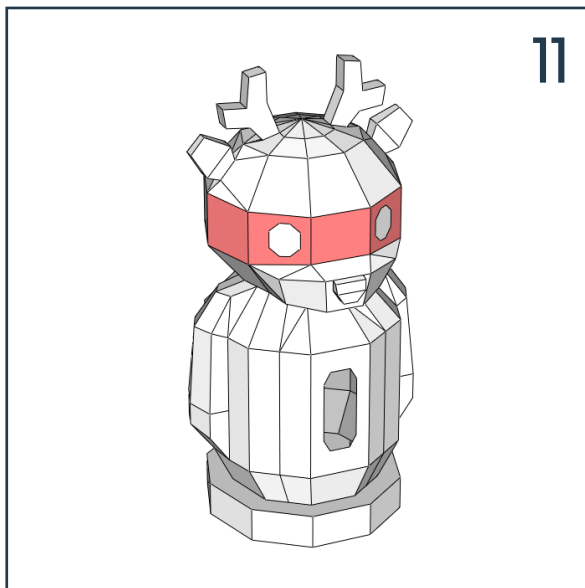
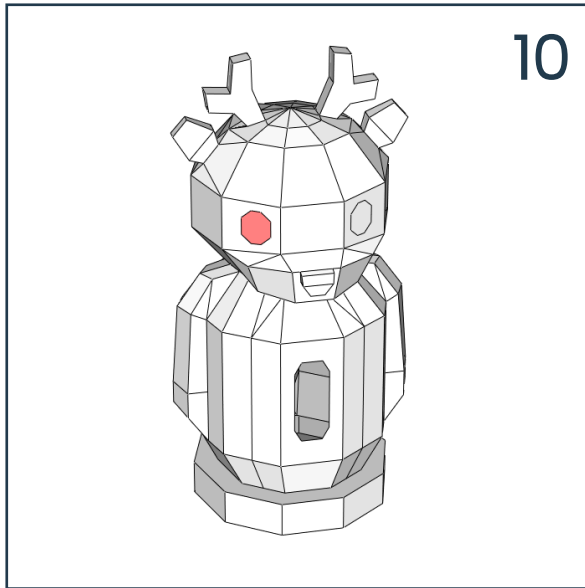
08



09

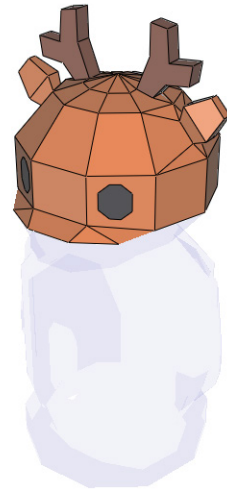
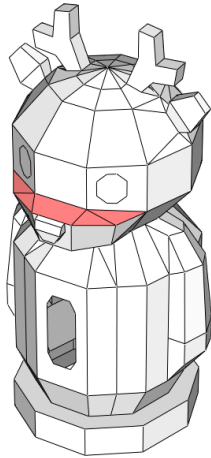


Assembly Scheme (4 - 12)

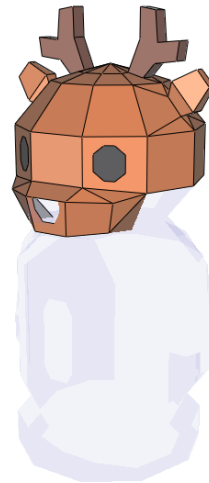
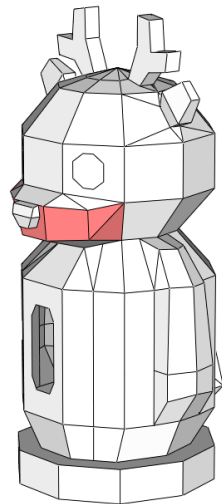


Assembly Scheme (5 - 12)

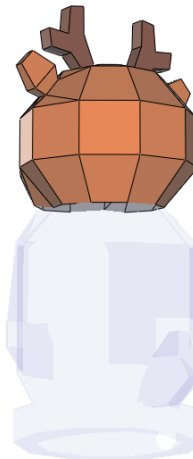
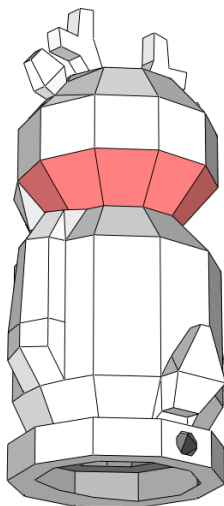
13



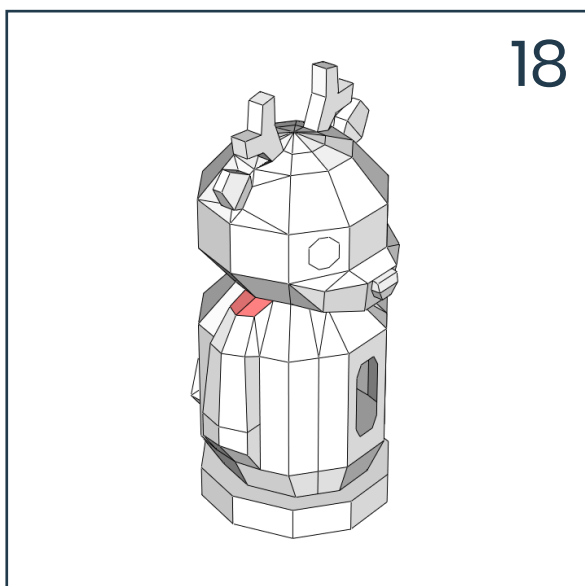
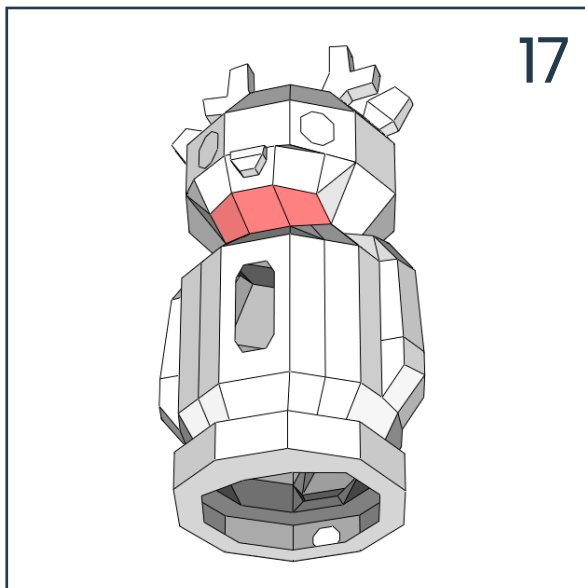
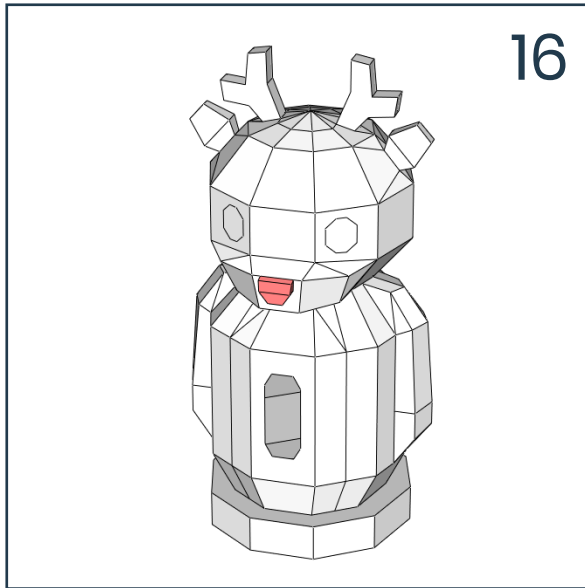
14



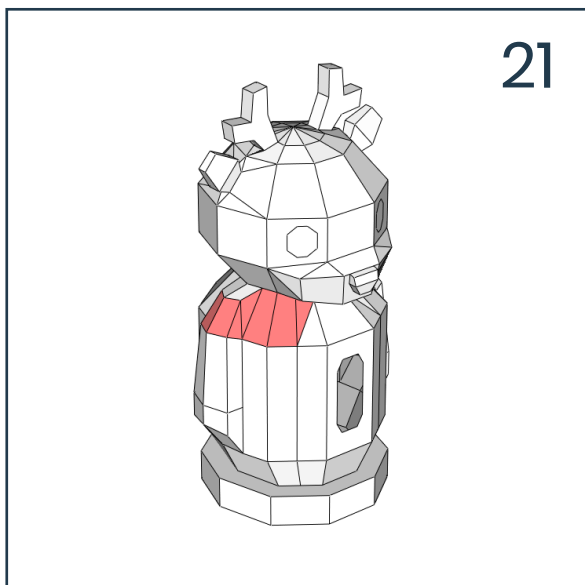
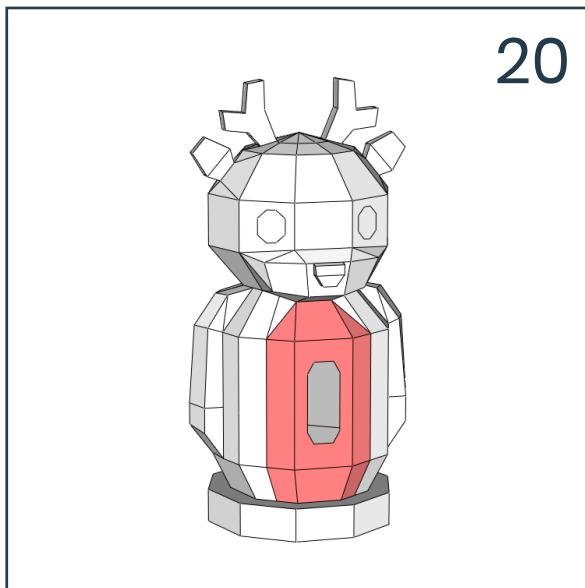
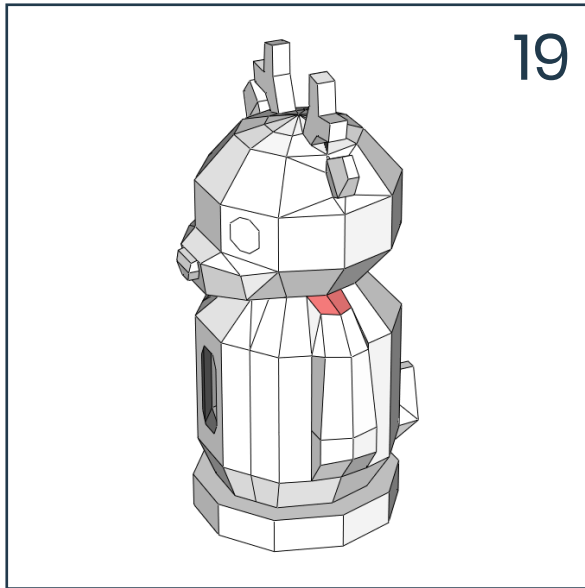
15



Assembly Scheme (6 – 12)

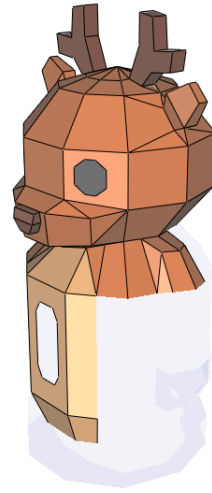
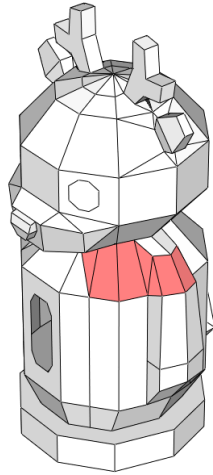


Assembly Scheme (7 – 12)

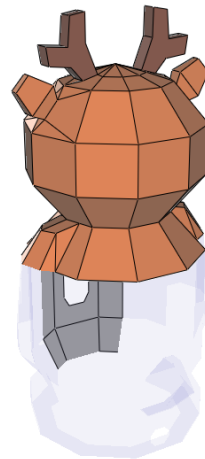
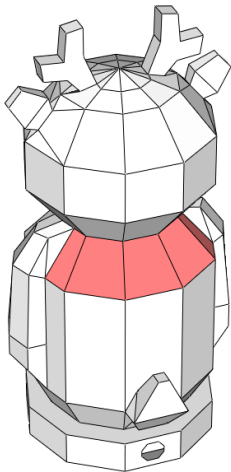


Assembly Scheme (8 – 12)

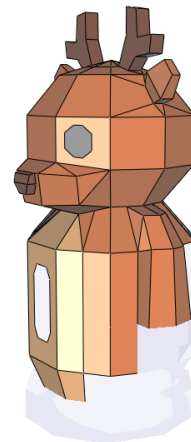
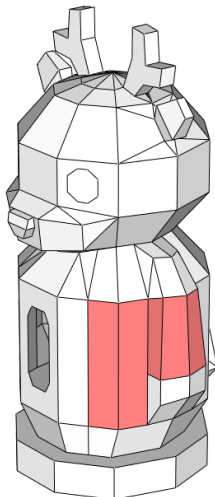
22



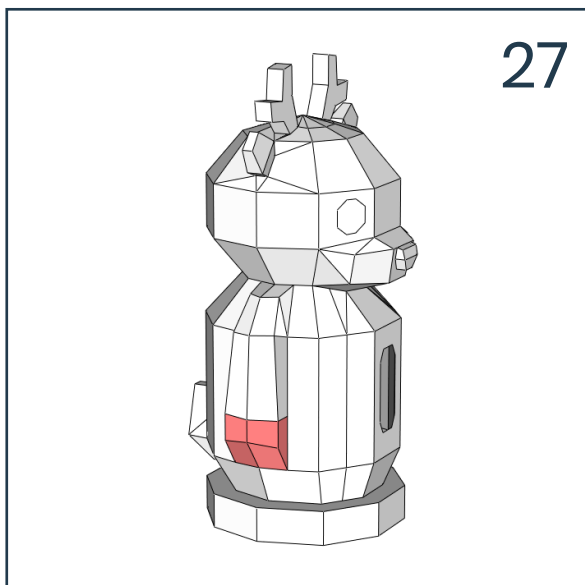
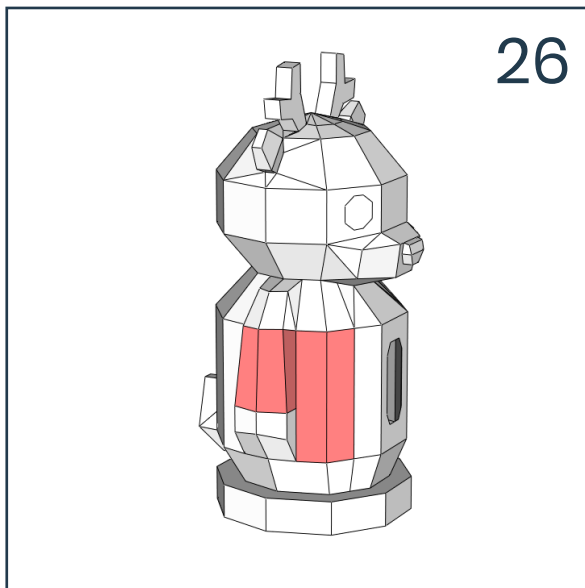
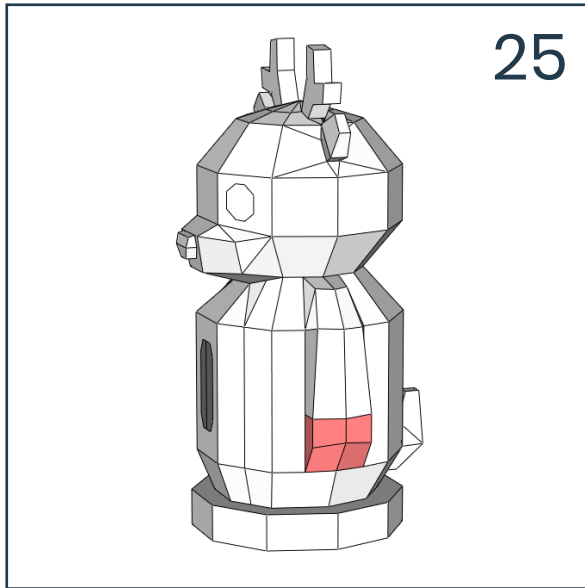
23



24

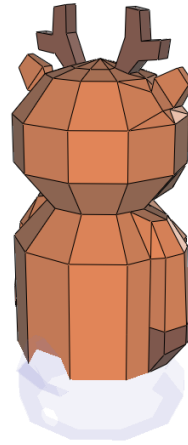
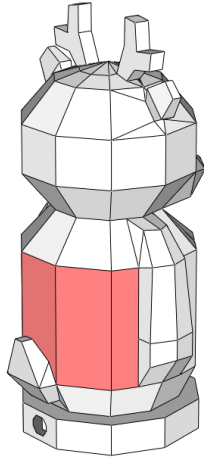


Assembly Scheme (9 - 12)

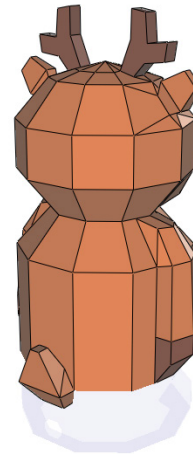
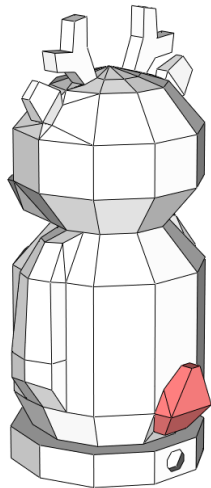


Assembly Scheme (10 – 12)

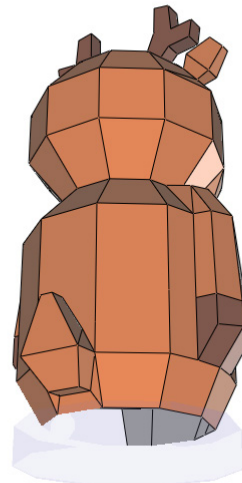
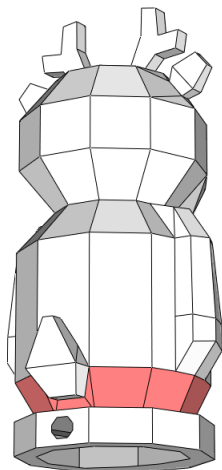
28



29

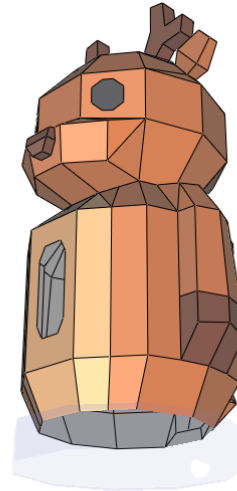
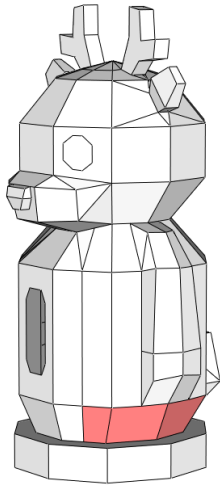


30

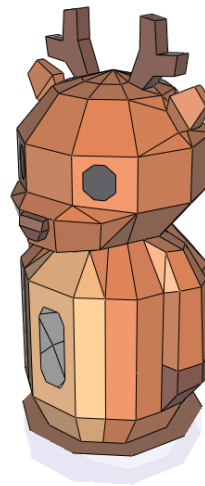
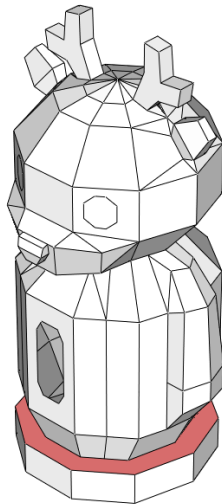


Assembly Scheme (11 – 12)

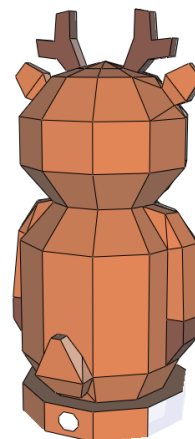
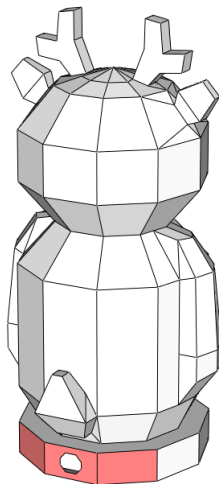
31



32



33



Assembly Scheme (12 – 12)

